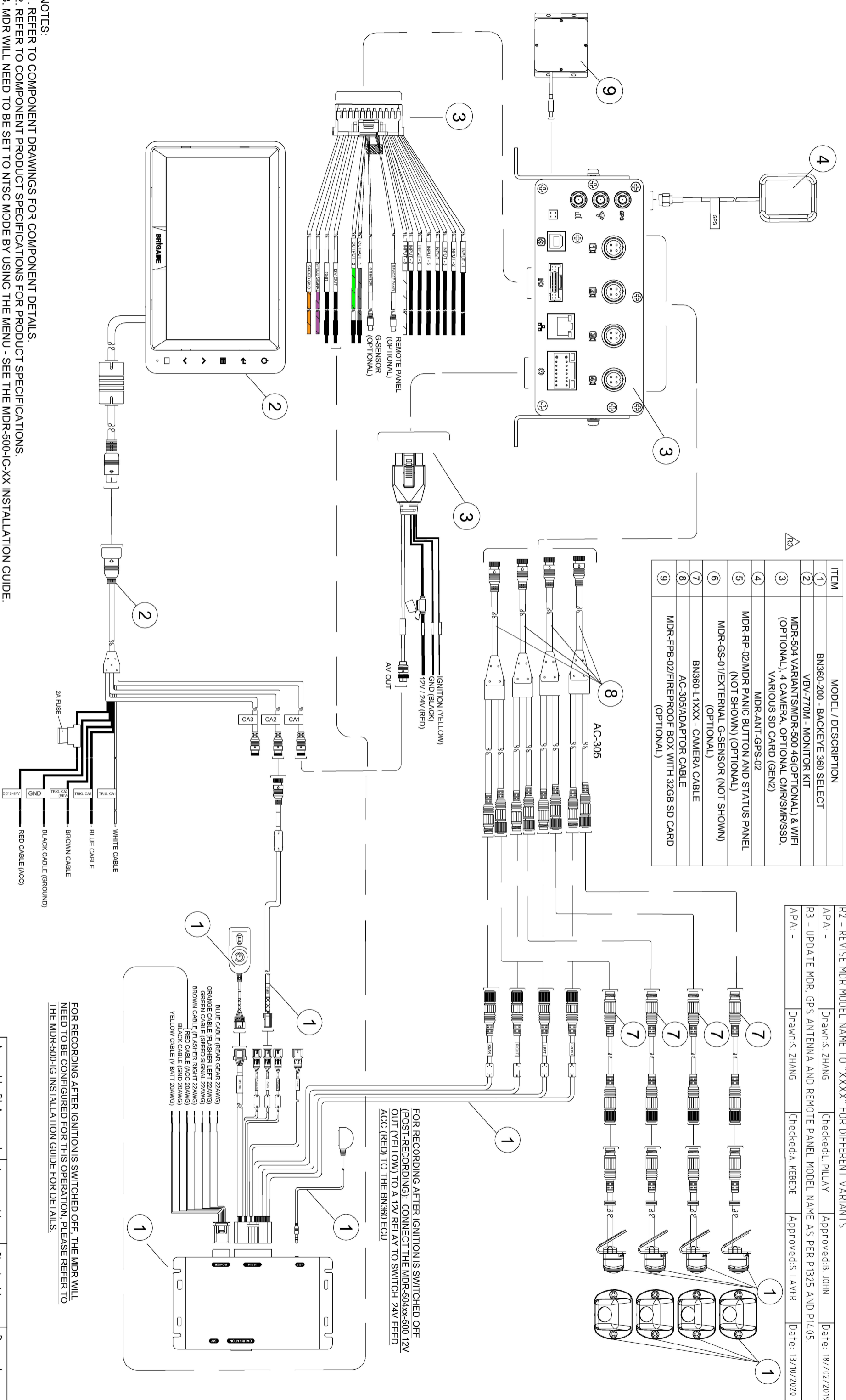


Revision Notes			
R2 - REVISE MDR MODEL NAME TO "XXXX" FOR DIFFERENT VARIANTS			
APA: -	Drawn's: ZHANG	Checked: L. PILLAY	Approved: B. JOHN
Date: 18/02/2019			
R3 - UPDATE MDR, GPS ANTENNA AND REMOTE PANEL MODEL NAME AS PER P1325 AND P1405			
APA: -	Drawn's: ZHANG	Checked: A. KEBEDE	Approved: S. LAVER
Date: 13/10/2020			

ITEM	MODEL / DESCRIPTION
1	BN360-200 - BACKEYE 360 SELECT
2	VBV-770M - MONITOR KIT
3	MDR-504 VARIANT/MDR-500 4G(OPTIONAL) & WIFI (OPTIONAL), 4 CAMERA, OPTIONAL CMRSMRSSD, VARIOUS SD CARD (GEN2)
4	MDR-ANT-GPS-02
5	MDR-RP-02/MDR PANIC BUTTON AND STATUS PANEL (NOT SHOWN) (OPTIONAL)
6	MDR-GS-01/EXTERNAL G-SENSOR (NOT SHOWN) (OPTIONAL)
7	BN360-L1XXX - CAMERA CABLE
8	AC-305/ADAPTOR CABLE
9	MDR-FPB-02/FIREPROOF BOX WITH 32GB SD CARD (OPTIONAL)



FOR RECORDING AFTER IGNITION IS SWITCHED OFF, THE MDR WILL NEED TO BE CONFIGURED FOR THIS OPERATION. PLEASE REFER TO THE MDR-500-IG INSTALLATION GUIDE FOR DETAILS.

- NOTES:
1. REFER TO COMPONENT DRAWINGS FOR COMPONENT DETAILS.
 2. REFER TO COMPONENT PRODUCT SPECIFICATIONS FOR PRODUCT SPECIFICATIONS.
 3. MDR WILL NEED TO BE SET TO NTSC MODE BY USING THE MENU - SEE THE MDR-500-IG-XX INSTALLATION GUIDE.
 4. BN360-LXXX CABLE LENGTH WILL BE DEPENDANT ON APPLICATION.
 5. VBV-14XX CABLE REQUIRED TO CONNECT TO MONITOR DEPENDING ON APPLICATION.
 6. REFER TO MDR-500-IG-XX INSTALLATION GUIDE FOR INSTALLATION, CALIBRATION & CONFIGURATION OF THE SYSTEM.
 7. TRIGGER CONNECTIONS DEPENDENT ON APPLICATION.

PROPRIETARY NOTICE
 THIS DESIGN AND TECHNICAL INFORMATION APPEARING ON THIS DRAWING IS THE PROPERTY OF BRIGADE ELECTRONICS, AND IS DISCLOSED IN CONFIDENCE. IT IS NOT TO BE COPIED, REPRODUCED, REVEALED TO OR EXPROPRIATED BY OTHERS, EITHER IN WHOLE OR IN PART WITHOUT THE EXPRESS WRITTEN CONSENT OF BRIGADE ELECTRONICS.

BRIGADE
 www.brigade-electronics.com

Angle of Projection	Third Angle
Assembly Pl Approval	
Approved by	B. JOHN
Checked by	D. RICHARDSON
Drawn by	L.PILLAY/SLAVER
Units	mm
Scale	N/A
Released	03/05/17
Assembly Ref	
Status	SELECT 360 WITH MDR-504
RELEASED	
Part No	N/A
	BE-003615-03-17